



Guide Price £280,000

67 Meadow Close, Bricket Wood, St. Albans, Hertfordshire, AL2 3QG



CARTER HAYWARD  
INDEPENDENT ESTATE AGENTS





- Mobile Home
- Centrally Located
- Allocated Parking Space
- Large Plot
- Rear Gardens
- Two Bedroom
- Close To Local Amenities
- No Upper Chain
- Council Tax Band A

Rarely available this two bedroom mobile home is located on the ever so popular Meadow Close centrally located in Bricket Wood, this site has a close community feel and is a stones throw from local amenities.

Situated on a large plot this home comes with a generous sized well lit lounge area, the dining room located off the lounge has double glazed doors leading into the rear garden.



A spacious kitchen is well presented with eye and base level units with views overlooking the front aspect. The first bedroom considered the master has ample space for a large double bed benefitting from a number of built in wardrobes, the second bedroom also a good size comes with built in wardrobe units. A utility room with plumbing completes the home.

The property comes with central heating and double glazed UPVC windows throughout.

Outside, this home has a larger than average rear garden for this style of property perfect for summer entertaining, fencing surrounds the home offering privacy.

Please note pitch fee's are applicable and available on request.

Viewings strictly by appointment through Carter Hayward on 01923 682888.







# Meadow Close AL2

Approximate Gross Internal Floor Area = 71.6 sq m / 772 sq ft

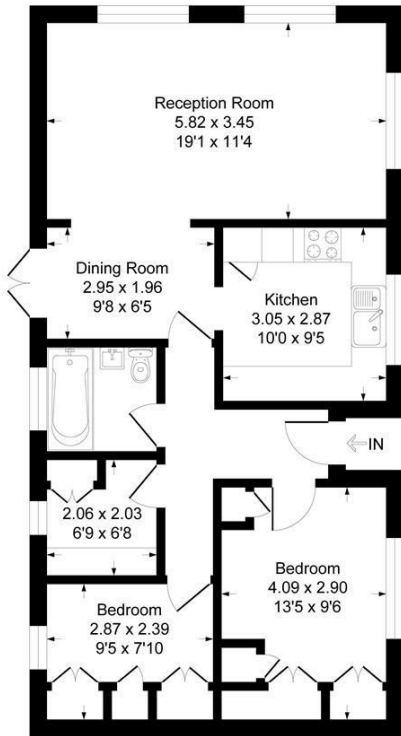


Illustration for identification purposes only, measurements are approximate, not to scale.



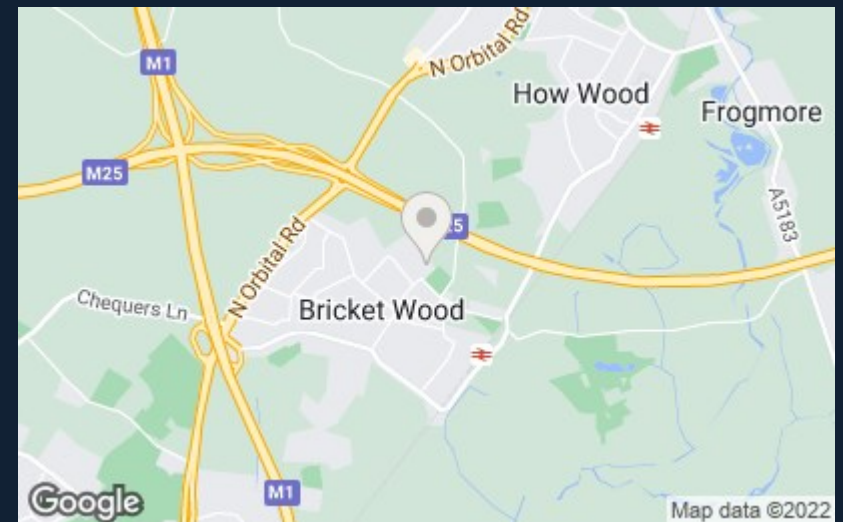
**CARTER HAYWARD**  
INDEPENDENT ESTATE AGENTS

[www.carterhayward.co.uk](http://www.carterhayward.co.uk)

119 Oakwood Road, Bricket Wood, St  
Albans, Hertfordshire, AL2 3QB

01923 682 888

[sales@carterhayward.co.uk](mailto:sales@carterhayward.co.uk)



Energy Efficiency Rating		Environmental Impact (CO <sub>2</sub> ) Rating	
Current	Potential	Current	Potential
Very energy efficient - lower running costs		Very environmentally friendly - lower CO <sub>2</sub> emissions	
(92 plus) <b>A</b>		(92 plus) <b>A</b>	
(81-91) <b>B</b>		(81-91) <b>B</b>	
(69-80) <b>C</b>		(69-80) <b>C</b>	
(55-68) <b>D</b>		(55-68) <b>D</b>	
(39-54) <b>E</b>		(39-54) <b>E</b>	
(21-38) <b>F</b>		(21-38) <b>F</b>	
(1-20) <b>G</b>		(1-20) <b>G</b>	
Not energy efficient - higher running costs		Not environmentally friendly - higher CO <sub>2</sub> emissions	
England & Wales		England & Wales	
EU Directive 2002/91/EC		EU Directive 2002/91/EC	

